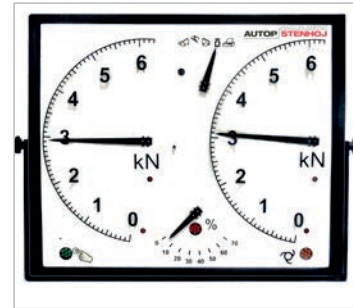


#### Application

- Check-in
- Repair and maintenance
- Testing equipment
- General inspection



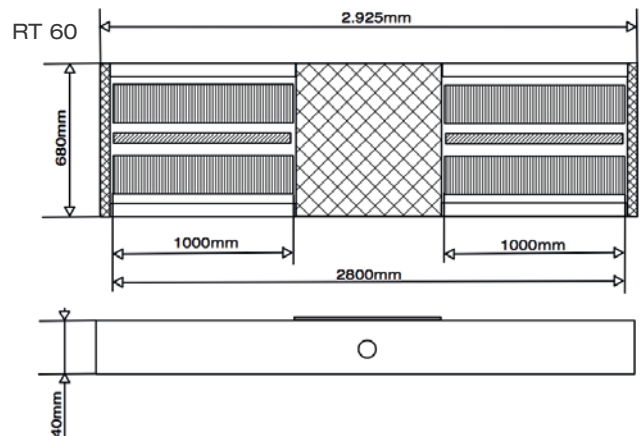
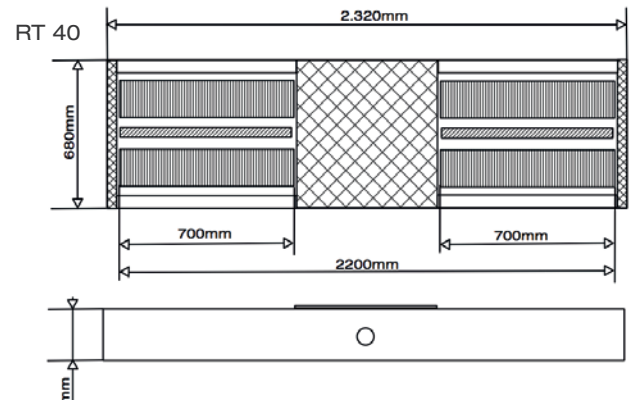
# Testmaster RT40/RT60

## Roller brake tester

### Description:

- Hot-dip galvanized, enclosed roller set
- Low wear rollers, 205 mm with welded profile surface
- Track width RT40: 800 to 2,200 mm (optional 800 up to 2,800 mm) / RT60: 800 to 2,800 mm
- Adjusting screws for height adjustment
- Wear-free, electronic measuring system DMS
- Tracer rollers 50 mm, standard stainless steel
- Prepared for weighing device
- Modular system, all roller sets can be extended to test lane
- Compact electric / switchbox, prepared for upgrade
- Drive-over axle load RT40 4 t (optional up to 5 t) / Drive-over axle load RT60 6 t
- Brake force RT40 4,5 kN (optional 6 kN) / Brake force RT60 6 kN (optional 10 kN)
- Already equipped with a drive-off assistance
- Manual / Automatic mode
- Delayed switch on, start-up monitoring, slip switch-off and switch-off after exiting the test bed
- Testing program for electronic parking brakes
- Lockable main switch
- Large easy to read analog display with 2 x 400 mm Watches

Technical data		
Drive over load	RT40	4,000 kg
	RT60	6,000 kg
Test speed	700 mm 1,000 mm*	
Drive power of motors	RT40	2 x 3 kW (optional 2 x 4 kW Motoren)
	RT60	2 x 4 kW (optional 2 x 5.5 kW Motoren)
Roller diameter	205 mm	
Track width	RT40	800 - 2.,200 mm (optional 800 - 2,800mm)
	RT60	800 - 2,800 mm
Test load	RT40	at 50% braking 2,0 t (option 2.6 t)
	RT60	at 50% braking 2,6 t (option 4 t)
Fuse protection	3 x 20 A inert (3 - 4 kW Motoren) 3 x 25 A inert (5,5 kW Motoren)	
Electrical connection	3 x 400 V, N, PE 50 Hz	
Brake force	RT40	4.5 kN (option 6 kN)
	RT60	6 kN (option 10 kN)
Diemsions analog display box (W x H x D)	810 x 670 x 70 mm	
Dimensions brake plate (L x W x H)	RT40	2,320 x 680 x 240 (800 - 2,200 mm)
	RT60	2,925 x 680 x 240 (800 - 2,800 mm)



**autop Maschinenbau GmbH**  
 Sandkampstraße 90  
 48432 Rheine | Germany  
 ☎ +49 5971 8602-02  
 📠 +49 5971 8602-25  
 ✉ info@autopstenhoj.com

**STENHOJ A/S**  
 Barrit Langgade 188-190  
 7150 Barrit | Denmark  
 ☎ +45 76821-330  
 📠 +45 76821-331  
 ✉ info@autopstenhoj.com

**Optional extras:**

- Roller set RT40 track width 800 - 2,800 mm
- Foundation frame
- Permanent formwork
- Plastic-coated rollers
- Pneumatic lowering / lifting device
- Roller set raising
- Suspension tester
- Side slip tester
- Manually reversible rotation and measuring direction
- Automatically four wheel recognition (patented)
- EDOS (Easy drive out system - patented)

- Roller cover plate
- Remote control
- Digital display LED
- Pedal force meter
- Weighing device
- PC connection & ASA live stream
- Minicomputer for ASA live stream
- PC Software Display Basic, Display Test Lane & Display Office

**Other special equipment possible!**

